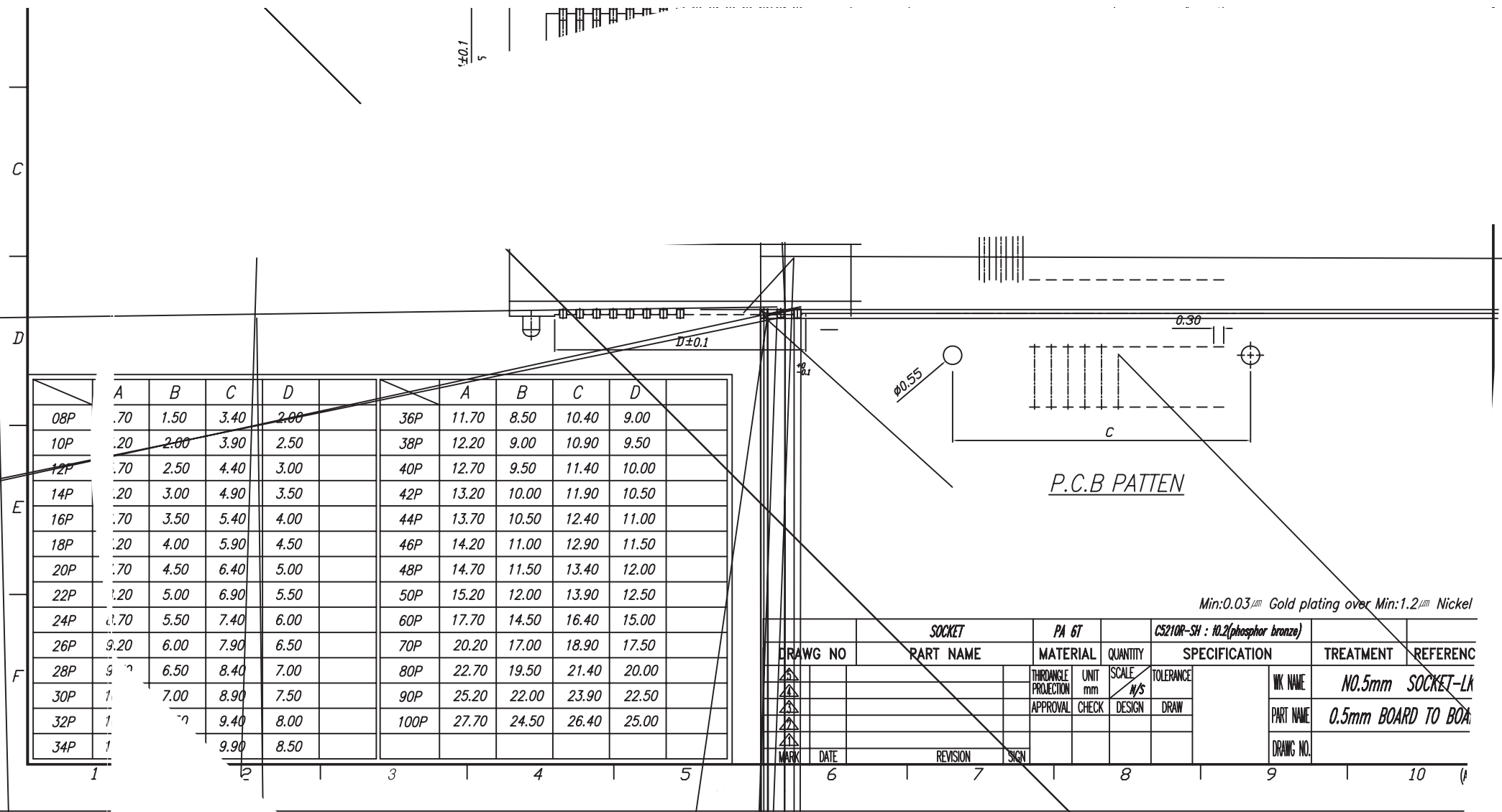


NO	변경 사항	수정 내용					
1	3개소 형상 변경	변경점 통보서에 의거			2012.05.08	2012.05.08	C.W.L
2							

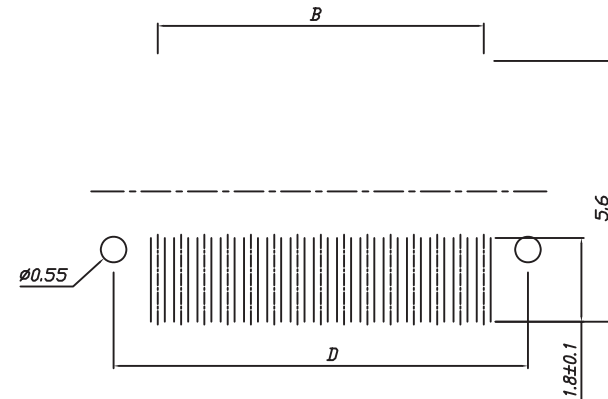
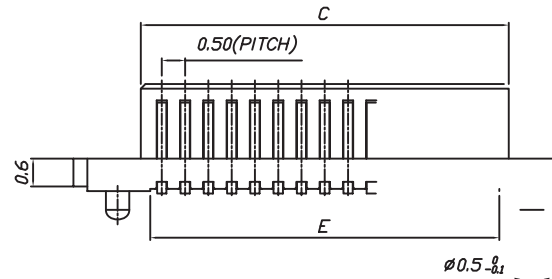
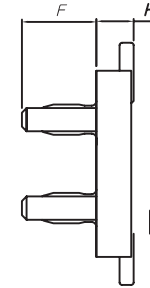
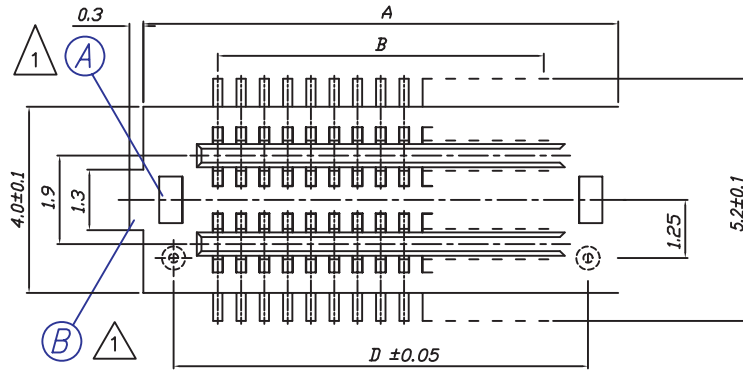


	A	B	C	D		A	B	C	D	
08P	1.70	1.50	3.40	2.00		36P	11.70	8.50	10.40	9.00
10P	2.20	2.00	3.90	2.50		38P	12.20	9.00	10.90	9.50
12P	2.70	2.50	4.40	3.00		40P	12.70	9.50	11.40	10.00
14P	3.20	3.00	4.90	3.50		42P	13.20	10.00	11.90	10.50
16P	3.70	3.50	5.40	4.00		44P	13.70	10.50	12.40	11.00
18P	4.20	4.00	5.90	4.50		46P	14.20	11.00	12.90	11.50
20P	4.70	4.50	6.40	5.00		48P	14.70	11.50	13.40	12.00
22P	5.20	5.00	6.90	5.50		50P	15.20	12.00	13.90	12.50
24P	5.70	5.50	7.40	6.00		60P	17.70	14.50	16.40	15.00
26P	6.20	6.00	7.90	6.50		70P	20.20	17.00	18.90	17.50
28P	6.70	6.50	8.40	7.00		80P	22.70	19.50	21.40	20.00
30P	7.20	7.00	8.90	7.50		90P	25.20	22.00	23.90	22.50
32P	7.70	7.50	9.40	8.00		100P	27.70	24.50	26.40	25.00
34P	8.20	8.00	9.90	8.50						

DRAWG NO		SOCKET		PA 6T		CS210R-SH : #0.2(phosphor bronze)		TREATMENT		REFERENC	
PART NAME		MATERIAL		QUANTITY		SPECIFICATION		NO.5mm SOCKET-LK			
THROUGHLE PROJECTION		UNIT mm		SCALE #/S		TOLERANCE		PART NAME		0.5mm BOARD TO BOA	
APPROVAL		CHECK		DESIGN		DRAW		DRAWG NO.			
MARK		DATE		REVISION		SIGN					

Min:0.03 μ m Gold plating over Min:1.2 μ m Nickel

NO	변경 사항	수정 내용	비고	수정	일시	승인
1		기거		2012.05.08	2012.05.08	C.W.D 2012.05.09
2						
3						



HIGH	PLUG	SOCKET	F
3.0	0.8	2.2	1.6
3.5	1.3	2.2	1.6
4.0	1.0	3.0	1.9
4.5	1.0	3.5	1.9
5.0	1.0	4.0	1.9
5.5	1.0	4.5	1.9
6.0	2.0	4.0	1.9
6.5	2.0	4.5	1.9

	A	B	C	D			B	C	D	E	
10P	5.20	2.00	2.90	3.90			8.50	9.40	10.40	9.00	
12P	5.70	2.50	3.40	4.40			9.00	9.90	10.90	9.50	
14P	6.20	3.00	3.90	4.90			9.50	10.40	11.40		
16P	6.70	3.50	4.40	5.40			10.00	10.90	11.90		
18P	7.20	4.00	4.90	5.90	4.50	44P	13.70	10.50	11.40	12.40	
20P	7.70	4.50	5.40	6.40	5.00	46P	20	11.00	11.90	12.90	
22P	8.20	5.00	5.90	6.90	5.50	48P	14.70	11.50	12.40	13.40	
24P	8.70	5.50	6.40	7.40	6.00	50P	15.20	12.00	12.90	13.90	
26P	9.20	6.00	6.90	7.90	6.50	60P	17.70	14.50	15.50	16.40	
28P	9.70	6.50	7.40	8.40	7.00	70P	20.20	17.00	18.00	18.90	17.50
30P	10.20	7.00	7.90	8.90	7.50	80P	22.70	19.50	20.50	21.40	
32P	10.70	7.50	8.40	9.40	8.00	90P	25.20	22.00	23.00	23.90	22.50
34P	11.20	8.00	8.90	9.90	8.50	100P	27.70	24.50	25.50	26.40	

∅0.5- $\frac{H1}{1}$

Min:0.03 μ m Gold plating over Min:1.2 μ m Nickel

PART N/

TOLERANCE
N/S
DRAW



0.5mm BOARD TO BOARD