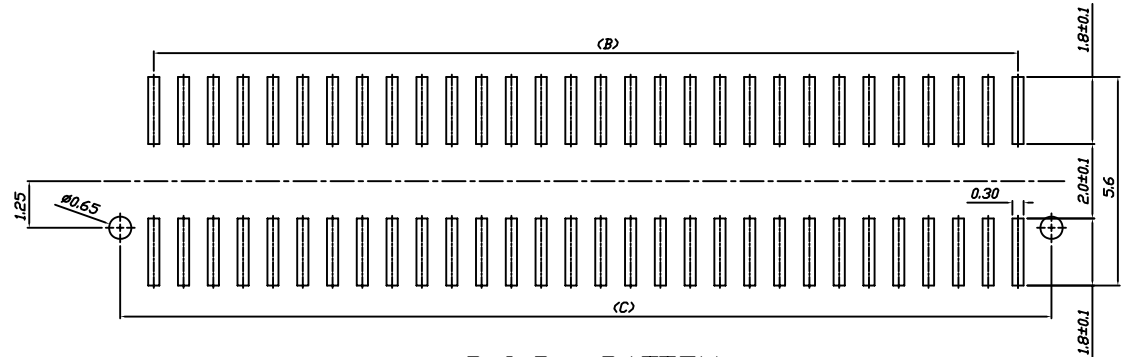
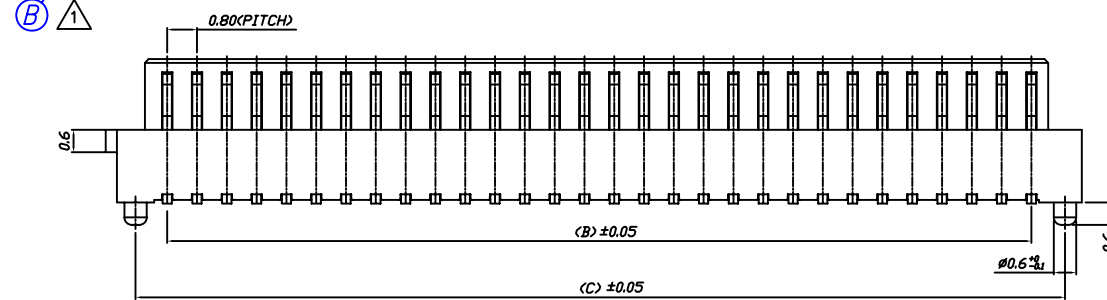
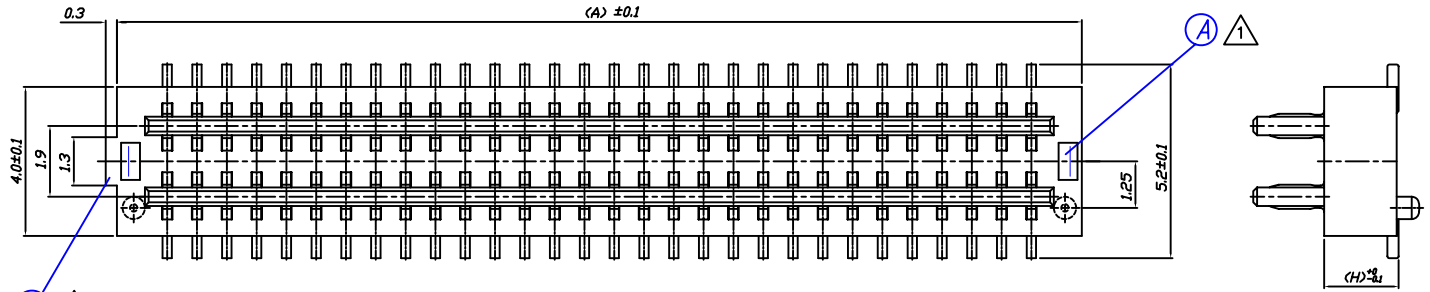


NO	변경 사항	수정 내용	비고	수정	일시	승인	일시
①	2개소 형상 변경	변경점 통보서에 의거		2012.05.08	2012.05.08	C.W.D	2012.05.09
②							
③							



P.C.B PATTEN

HIGH	PLUG(H)	SOCKET(H)
4.0	1.0	3.0
4.5	1.0	3.5
5.0	1.0	4.0
5.5	1.0	4.5
6.0	2.0	4.0
6.5	2.0	4.5

	A			B			
	A	B	C	A	B	C	
8P	5.1	2.4	4.2	34P	15.5	12.8	14.6
10P	5.9	3.2	5.0	36P	16.3	13.6	15.4
12P	6.7	4.0	5.8	38P	17.1	14.4	16.2
14P	7.5	4.8	6.6	40P	17.9	15.2	17.0
16P	8.3	5.6	7.4	42P	18.7	16.0	17.8
18P	9.1	6.4	8.2	44P	19.5	16.8	18.6
20P	9.9	7.2	9.0	46P	20.3	17.6	19.4
22P	10.7	8.0	9.8	48P	21.1	18.4	20.2
24P	11.5	8.8	10.6	50P	21.9	19.2	21.0
26P	12.3	9.6	11.4	60P	25.9	23.2	25.0
28P	13.1	10.4	12.2	70P	29.9	27.2	29.0
30P	13.9	11.2	13.0	80P	33.9	31.2	33.0
32P	14.7	12.0	13.8	100P	41.9	39.2	41.0

DRAWG NO		SOCKET		PA 6T		CS210P-SH : 10.25		TREATMENT		REFERENCE				
		PART NAME		MATERIAL		SPECIFICATION								
①				THROUGH	UNIT	SCALE	TOLERANCE	KLT	WK NAME	NO.8mm PLUG-LK				
②				PROJECTION	mm	#/S								
③				APPROVAL	CHECK	DESIGN	DRAW					PART NAME	0.8mm BOARD TO BOARD	
④				MARK	DATE	REVISION	SIGN					DRAWG NO.		

